

New!



patient satisfaction



Available in 4 colors



Multiple color options make it easy for patients to distinguish between their medications

Improves the Patient Experience and Increases Pharmacy Efficiency

Improve Patient Experience

- Easy-press buttons to eject full troches
- CLICK locking mechanism eliminates accidental opening
- 4 colors allow for medication differentiation
- Translucent tray allows for easy view of doses remaining
- Each .90 mL cavity allows for customizable dosing with scored halves and quarters

Increase Pharmacy Efficiency

- Easy-to-fill Troche-CLICK means reduced pharmacy labor
- Dispense directly to patient with disposable mold design
- Easy-to-eject and reinsert for quality control checks
- Heat resistant tray means less warping when filling or removing excess base with heat gun
- Large label surface on cover
- No need for extra sleeve covers

Compliant with FDA 21.177

| FDA grade materials

| BPA and Phthalate free

| Blocks UV

Request FREE Samples for Patient Trials at:
877.870.8448 info.TopiCLICK@teamtech.com

Topi-CLICK | TEAM Technologies
300 Parkbrooke Place, Suite 140, Woodstock, GA 30189 USA
T. 877.870.8448 E. info.TopiCLICK@teamtech.com
www.Topi-CLICK.com

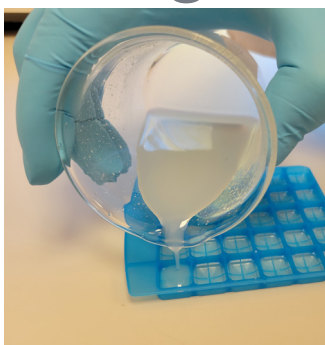
TOPI-CLICK
A DIVISION OF TEAM Technologies

ONE TEAM MANY TECHNOLOGIES



- ✓ Each 0.90 mL cavity allows for customizable dosing with scored halves and quarters
- ✓ Dispense directly to patient with disposable mold design
- ✓ Easy-to-eject and reinsert for quality control checks
- ✓ Heat resistant tray means less warping when filling or removing excess base with heat gun
- ✓ Large label surface on cover
- ✓ No need for extra sleeve covers

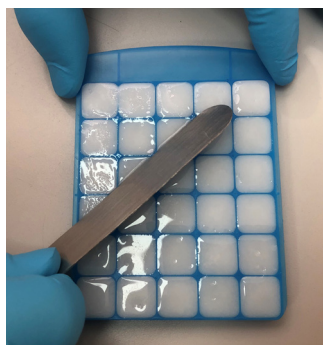
Filling Instructions



STEP 1:

Place the Troche-CLICK™ tray on a clean, level surface.

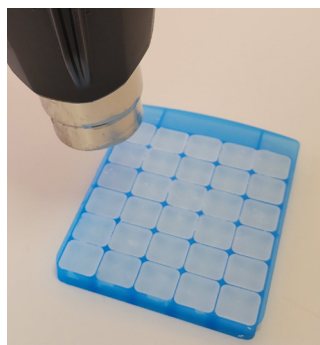
Fill the Troche-CLICK™ with mixture. Filling techniques may include: pouring directly from a glass beaker, transferring mixture using a syringe or transfer pipette.



STEP 2:

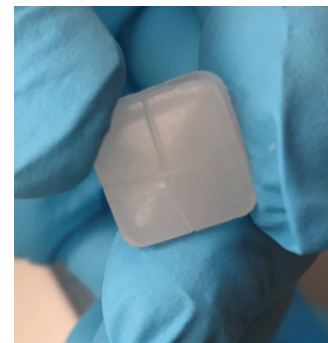
Remove excess troche material by scraping over the top of the troche lozenges with a clean spatula.

The PEG base shrinks during cooling. Add additional material to the individual cavities, if required.



STEP 3:

After the troche material has set, a heat gun can be used to remelt the top of the troches to provide a polished appearance to the troches.



STEP 4:

Troche lozenges can be removed and then replaced to conduct quality checks.



STEP 5:

Slide the troche tray into the cover.

Label can now be applied to the cover and lip of the tray.

TECHNICAL SPECIFICATIONS:

Topi-CLICK® Troche-CLICK™

Dispenser Volume:	Up to 30 individual 0.90 mL troche lozenges.
Delivery Volume:	0.90 mL per troche (Each troche can be divided into halves or quarters).
Doses Provided:	Device holds thirty 0.90mL doses.



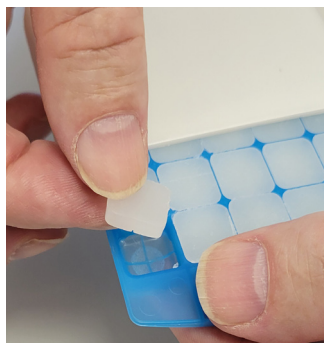
- ✓ Each 0.90 mL cavity allows for customizable dosing with scored halves and quarters
- ✓ Easy-press buttons to eject full troches
- ✓ CLICK locking mechanism eliminates accidental opening
- ✓ Translucent tray allows for easy view of doses remaining
- ✓ Available in 4 colors to aid in medication differentiation

Patient Use Instructions



STEP 1:

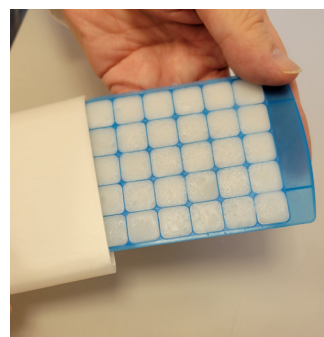
Remove troche tray from protective cover.



STEP 2:

Use Easy-press buttons to eject troche lozenge.

Dispense troche lozenge dosage as directed by your physician or pharmacist.



STEP 3:

Slide protective cover over tray to activate the CLICK locking mechanism.

Topi-CLICK® Troche-CLICK™ is Available in 4 Colors



Multiple Color Options make it easy for patients to distinguish between their medications.

Made of FDA grade materials | BPA and Phthalate free | Blocks UV.

Topi-CLICK® Troche-CLICK Patent Pending

Troche-CLICK Patient Use_102821

© 2021 TEAM Technologies, Inc. All Rights Reserved.

TO ORDER:

info.TopiCLICK@teamtech.com

| 877-870-8448

| www.Topi-CLICK.com



Topi-CLICK® Troche-CLICK™ Specifications

Topi-CLICK® Troche-CLICK™ : 0.90 mL per cavity - Provides customizable dosing with scored halves and quarters.

DESCRIPTION: Troche-CLICK™ is an innovative way to provide an accurate dose to patients in a troche lozenge. The easy-to-fill Troche-CLICK™ increases pharmacy efficiency and improves the patient experience with medications dispensed directly from the disposable mold design. Troche-CLICK® is available in 4 vibrant colors which allows for easy medication differentiation and quality control.

FEATURES:

- Each cavity will contain a 0.90mL smooth troche lozenge designed for comfortable usage.
- Each cavity provides score lines for easy division of troches into halves or quarters for greater customizability of dosing.
- Each cavity has a textured, easy eject button for quick removal of troches from the tray.
- Large labeling surface on cover.
- Secondary labeling surface on tray.
- Translucent tray allows for easy view of doses remaining.
- CLICK locking mechanism designed to resist accidental opening.

TECHNICAL SPECIFICATIONS: Topi-CLICK® Troche-CLICK™

Dispenser Volume: Up to 30 individual 0.90 mL troche lozenges.

Delivery Volume: 0.90 mL per troche (Each troche can be divided into halves or quarters).

Doses Provided: Device holds thirty 0.90 mL doses.

- Class 1 Medical Device
- Topi-CLICK's FDA Registration # is 3007142798.
- Materials compliant with FDA CFR 21.177 code, which is the requirement for (<USP 661>).
- Made of FDA grade materials | BPA and Phthalate free | Blocks UV.
- Recycling Code is #5♻️. Visit <http://doselogix.com/recycling-your-topi-click> for more information on recycling Topi-CLICK®.

***Volumes are approximate. As required for compounded prescription pharmaceuticals dispensed in volume dispensers, verify the weight to volume conversions thoroughly. One time use only.**