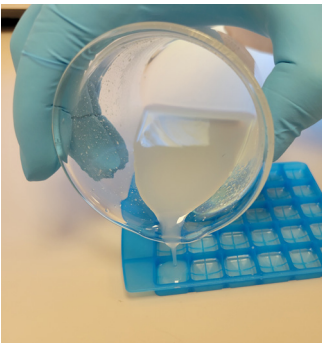


Topi-CLICK
Troche-CLICK™



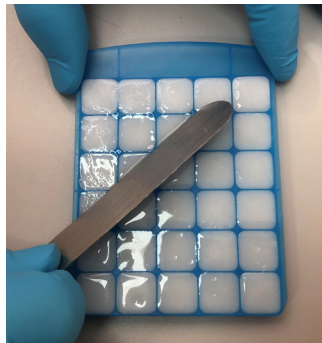
- ✓ Each 0.90 mL cavity allows for customizable dosing with scored halves and quarters
- ✓ Dispense directly to patient with disposable mold design
- ✓ Easy-to-eject and reinsert for quality control checks
- ✓ Heat resistant tray means less warping when filling or removing excess base with heat gun
- ✓ Large label surface on cover
- ✓ No need for extra sleeve covers

Filling Instructions



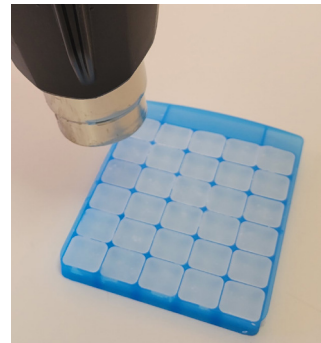
STEP 1:
Place the Troche-CLICK™ tray on a clean, level surface.

Fill the Troche-CLICK™ with mixture. Filling techniques may include: pouring directly from a glass beaker, transferring mixture using a syringe or transfer pipette.



STEP 2:
Remove excess troche material by scraping over the top of the troche lozenges with a clean spatula.

The PEG base shrinks during cooling. Add additional material to the individual cavities, if required.



STEP 3:
After the troche material has set, a heat gun can be used to remelt the top of the troches to provide a polished appearance to the troches.



STEP 4:
Troche lozenges can be removed and then replaced to conduct quality checks.



STEP 5:
Slide the troche tray into the cover.

Label can now be applied to the cover and lip of the tray.

TECHNICAL SPECIFICATIONS:

Topi-CLICK® Troche-CLICK™

Dispenser Volume: Up to 30 individual 0.90 mL troche lozenges.

Delivery Volume: 0.90 mL per troche (Each troche can be divided into halves or quarters).

Doses Provided: Device holds thirty 0.90mL doses.