

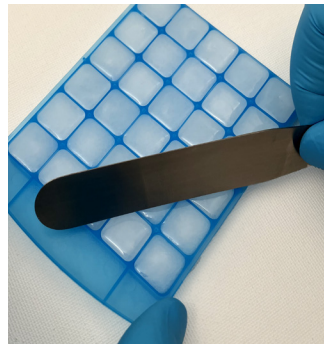



- ✓ Flexible Easy-press Buttons™ to eject full troches.
- ✓ Dispense directly to patient with disposable mold design.
- ✓ Easy-to-eject and reinsert for quality control checks.
- ✓ Heat resistant tray means less warping when filling or removing excess base with heat gun.
- ✓ Large label surface on cover.
- ✓ No need for extra sleeve covers.

Filling Instructions



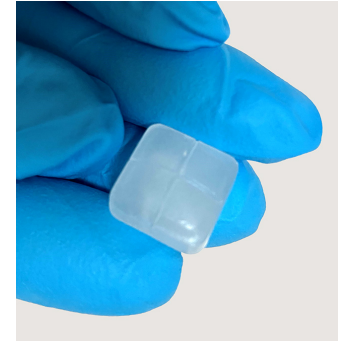
STEP 1:
Place the Troche-CLICK™ tray on a clean, level surface. Fill the Troche-CLICK™ with mixture.
Filling techniques may include: pouring directly from a glass beaker, transferring mixture using a syringe or transfer pipette.



STEP 2:
Remove excess troche material by scraping over the top of the troche lozenges with a clean spatula.
The PEG base shrinks during cooling. Add additional material to the individual cavities, if required.



STEP 3:
After the troche material has set, a heat gun can be used to remelt the top of the troches to provide a polished appearance to the troches.



STEP 4:
Troches lozenges can be removed and then replaced to conduct quality checks.



STEP 5:
Slide the troche tray into the cover. Label can now be applied to the cover and lip of the tray.

TECHNICAL SPECIFICATIONS:

Topi-CLICK® Troche-CLICK™

Dispenser Volume: Up to 30 individual 1.0g (PEG 1450) troche lozenges.

Delivery Volume: 1.0g (PEG 1450) per troche (Each troche can be divided into halves or quarters).

Doses Provided: Device can hold thirty 1.0g (PEG 1450) doses.